



THE WAY WE LIVE

LOCAL IMMIGRATION PARTNERSHIPS (LIPs)

TRANSFORMING | **EDMONTON**

BRINGING OUR CITY VISION TO LIFE

THE CITY OF
Edmonton

WHAT ARE LIPS

- Local Immigration Partnerships are the mechanism through which Citizenship and Immigration Canada supports the **development of local collaborations and community-based planning around the needs of newcomers.**
- Local Immigration Partnerships exist in several municipalities throughout Canada and are created to engage various stakeholders in **a locally-driven strategic planning process to identify assets and gaps** within the immigration and settlement experience.

- **LIPs** focus on what is currently available to newcomers and make recommendations on how to strengthen the system to **promote settlement and inclusion for all newcomers.**

VISION OF LIPs

- Integrate newcomer needs into the community planning process;
- Identify community specific strategic priorities;
- Implement a settlement strategy and action plan to improve newcomer outcomes

LOCAL IMMIGRATION PARTNERSHIPS

- Encourage dialogue and information sharing between sectors;
- Identify gaps and align services;
- **LIPs do not provide direct service delivery, nor do they make funding decisions.**

WHAT DO LIPS LOOK LIKE

- **LIPs** are directed by broad-based coordinating councils.
- The main goal of the partnership council is to oversee the development of a LIP strategy and develop an action plan to create a more **welcoming and inclusive community**.

- **STEERING COUNCIL**
- **WORKING GROUPS**
- **ADVISORY GROUPS**



LIP COORDINATOR

ADMINISTRATIVE SUPPORT

CITIZENSHIP
AND
IMMIGRATION
CANADA

City of
Edmonton

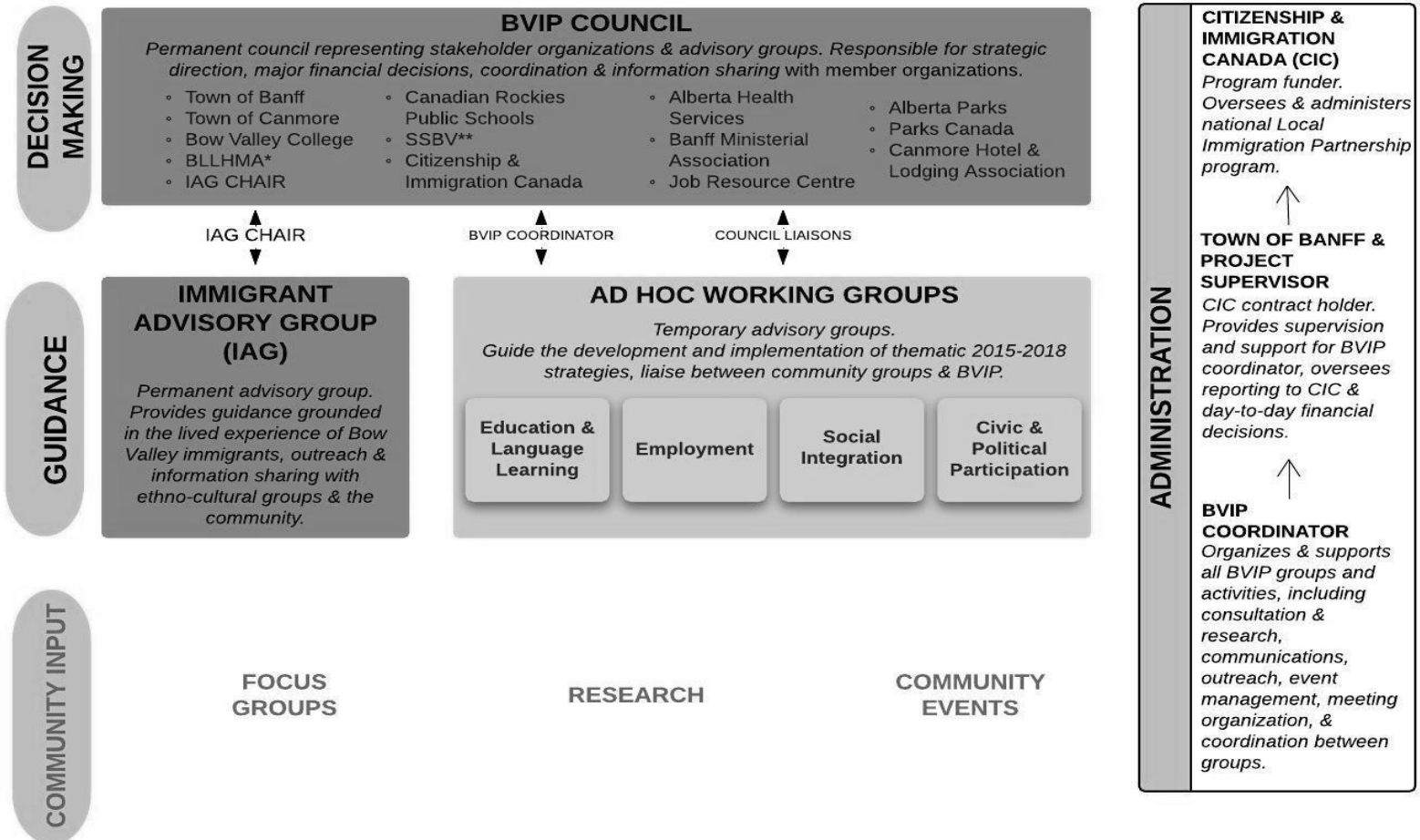
Multicultural
Relations
Office

CITIZENSHIP AND IMMIGRATION CANADA: LIP program funder. Oversees and administers national LIP program.

CITY OF EDMONTON: Holder of the CIC Contribution Agreement. Provides support for LIP through City Council and administration.

MULTICULTURAL RELATIONS OFFICE: Organizes, develops, and supports all LIP related activities. Responsible for the delivery of all projects as outlined in the CIC contribution agreement; Responsible for reporting program and financial activities to CIC (as required by the CIC contribution agreement).

Bow Valley Immigration Partnership (BVIP) Governance Structure



* Banff Lake Louise Hotel Motel Association

** Settlement Services in the Bow Valley

- **Examples of LIP projects include (but are not limited to):**

- Newcomer needs assessment
- Strategic / action planning
- Increase collaboration between stakeholders

- Coordinate services at community level
- Improve accessibility to services
- Increase awareness of settlement services

THE WAY WE LIVE

EDMONTON'S PEOPLE PLAN

Approved by Edmonton City Council, July 2010



ALIGNMENT WITH STRATEGIC DIRECTION:

The Way We Live | Goal #1 - Edmonton is a vibrant, connected and engaged welcoming city.

Meets objective 1.4 The City of Edmonton connects individuals, families, groups, cultures and communities to the services they need to thrive and realize their potential.

The Way We Live | Goal #2 – Edmonton is a caring, inclusive and affordable city.

Meets objective 3.2 The City of Edmonton increases opportunities to improve the lives of its vulnerable population.

SIX GAME CHANGERS

endpoverty
edmonton

Research indicates that there are six key areas of actions that will make a significant difference to individuals and families struggling with poverty:

1. ELIMINATE RACISM
 2. LIVABLE INCOMES
 3. AFFORDABLE HOUSING
 4. ACCESSIBLE & AFFORDABLE TRANSIT
 5. AFFORDABLE & QUALITY CHILD CARE
 6. ACCESS TO MENTAL HEALTH SERVICES
-

THESE ARE CRITICAL PLACES TO START AND ALONG WITH OTHER LONG-TERM ACTIONS **WILL END POVERTY.**



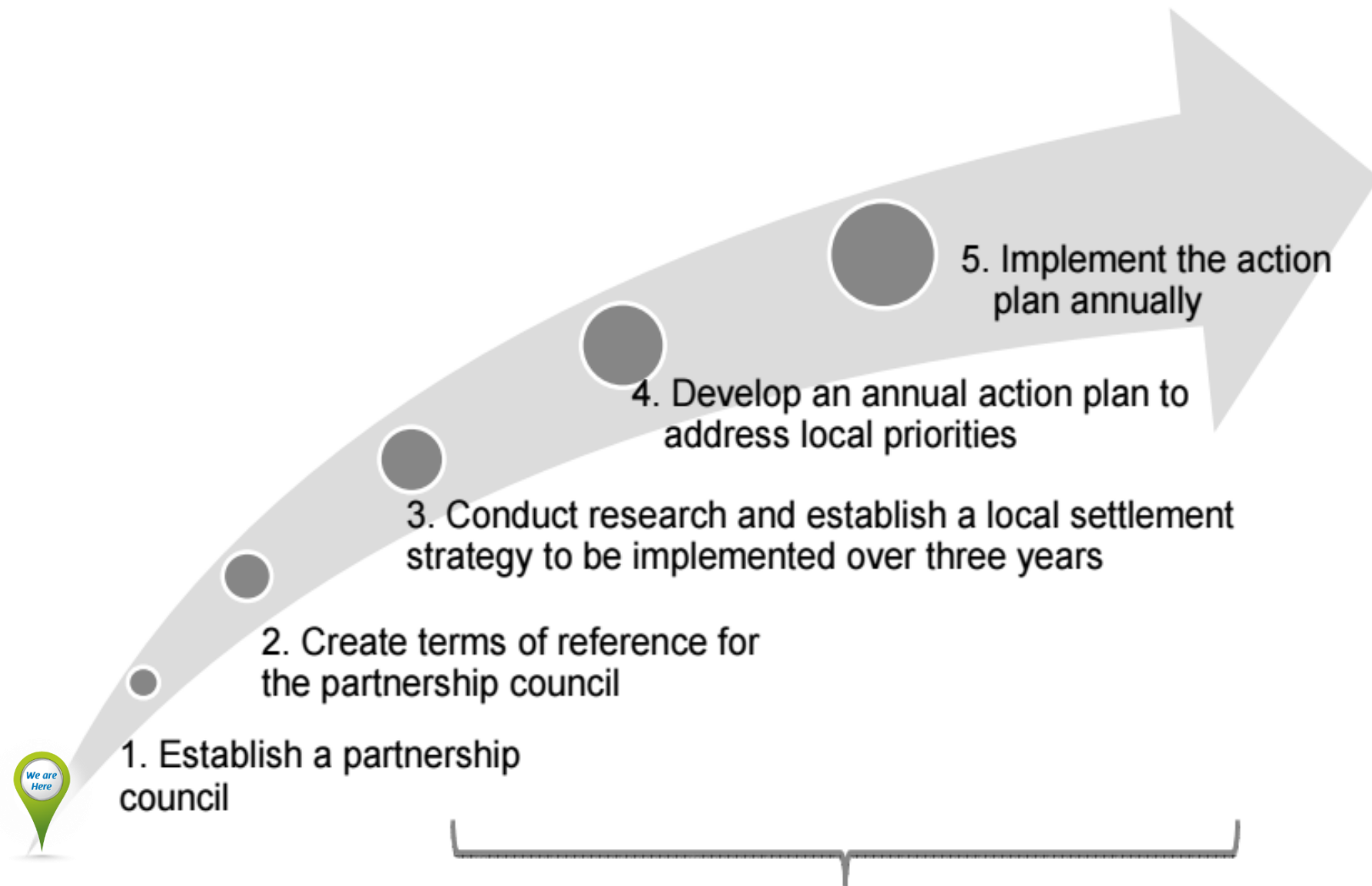
TRANSFORMING | **EDMONTON**

BRINGING OUR CITY VISION TO LIFE

EDMONTON FOR ALL

WHAT ARE THE NEXT STEPS

Steps in the LIPs process



1. Establish a partnership council

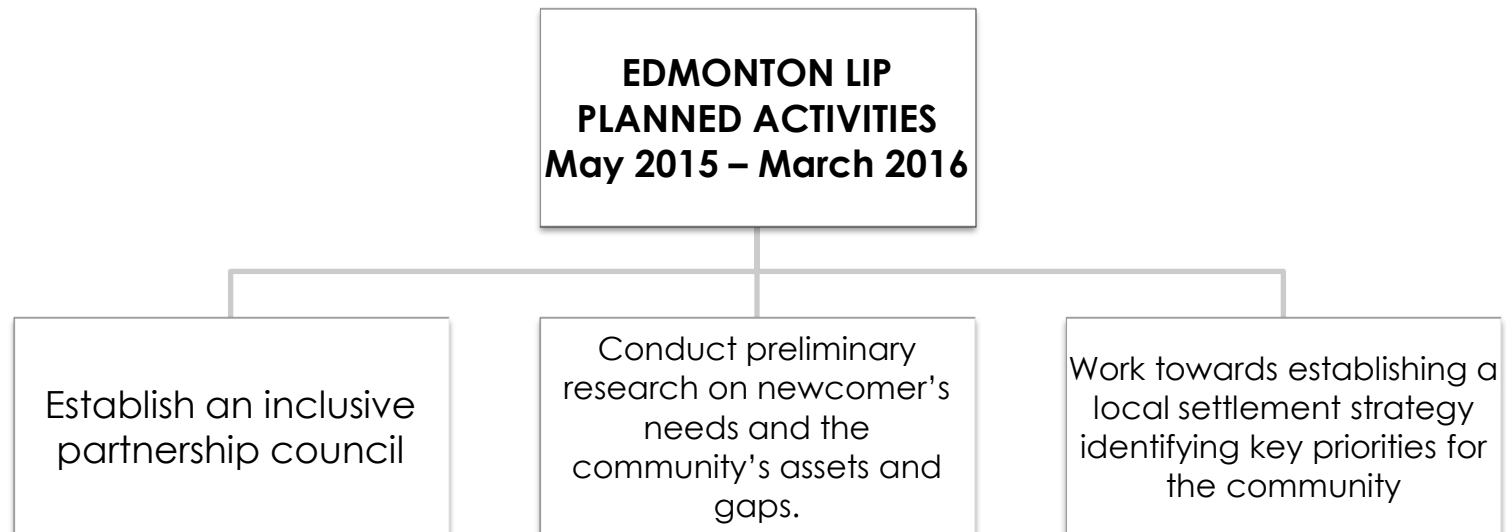
2. Create terms of reference for the partnership council

3. Conduct research and establish a local settlement strategy to be implemented over three years

4. Develop an annual action plan to address local priorities

5. Implement the action plan annually

Assess progress and measure outcomes



- Follow-up survey will be sent out asking organizations/individuals to self-identify where they feel they can contribute to the development of a LIP
- LIP Coordinator will follow up
- Feel free to send names of organizations who may be interested in being a part of the LIP.

THANK YOU!

e. jennifer.fowler@edmonton.ca

A/Director - Multicultural Relations

e. Irfan.Chaudhry@edmonton.ca

LIP Project Coordinator